

# Permaroof<sup>UK</sup><sup>®</sup>

External corner detail (Quickseam Formflash)



## External corner detail (Quickseam Formflash)

The external corner is a common detail and is dealt with as follows:-

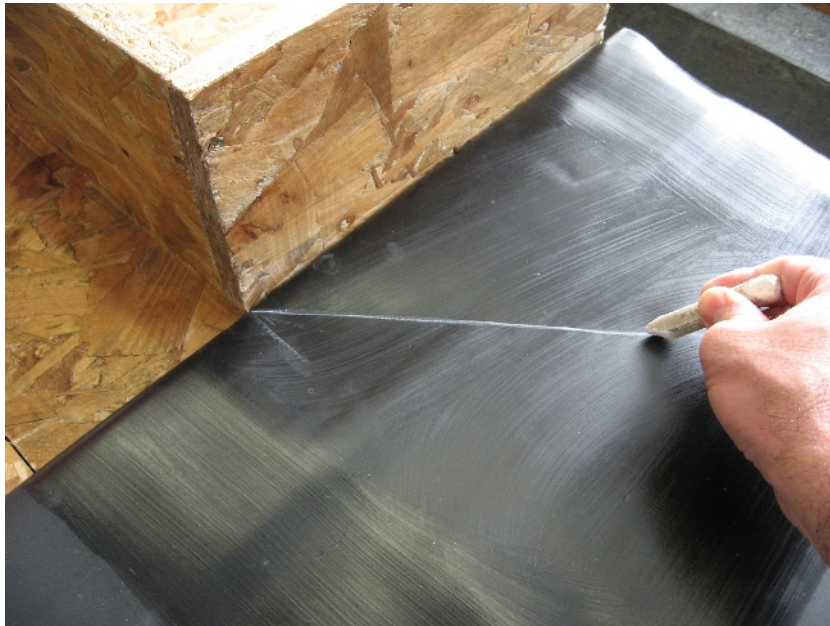
Offer the membrane up to the base of the upstand and fold back enough material to get the 4" roller in to apply the contact adhesive onto the deck, the upstand, and also on the back of the membrane.



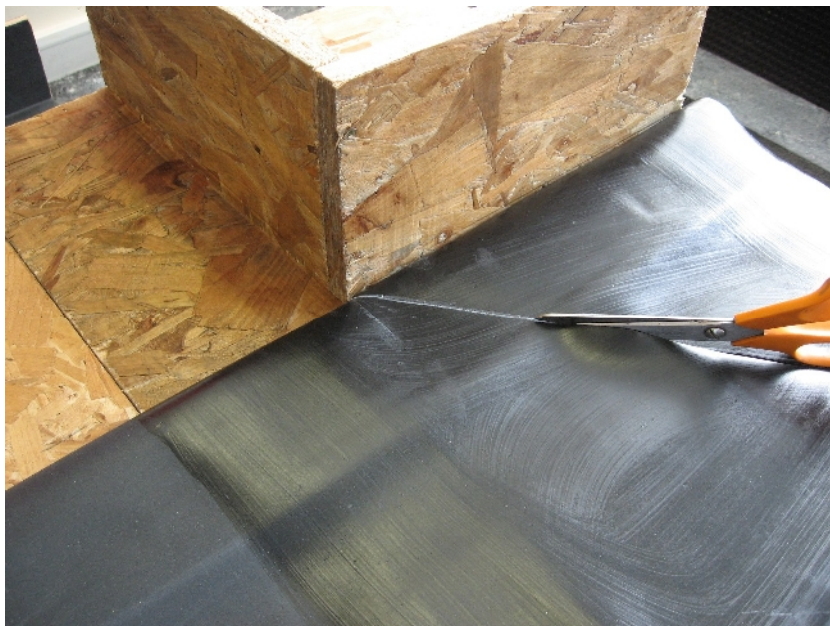
Once the contact adhesive is tacky, offer the membrane to base of the upstand, pushing right into the angle change to eliminate any tenting.



Mark a line with the crayon, at 45° from the corner. This will create the resulting "V-shape" on the upstand.

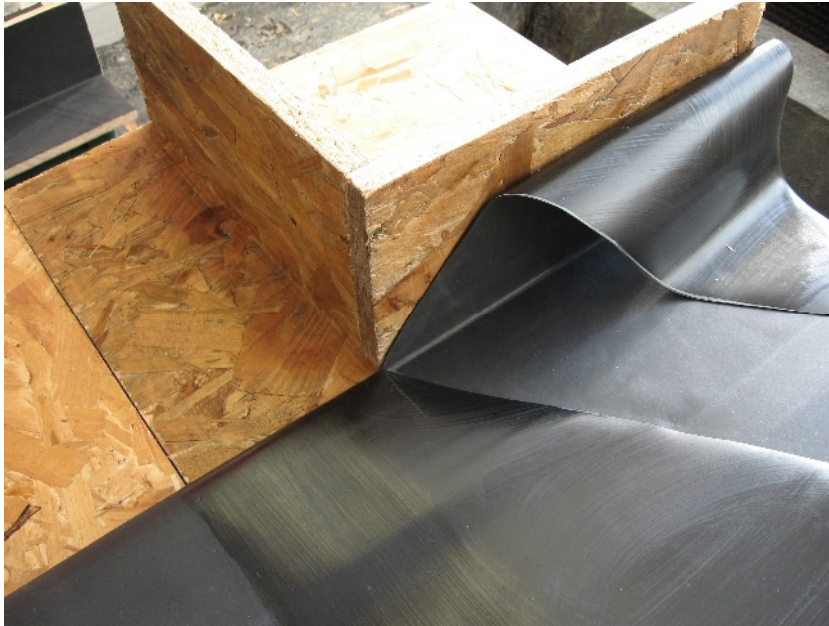


Cut down the marked line until you reach the upstand corner. Also cut away any excess membrane, to make handling the material easier.

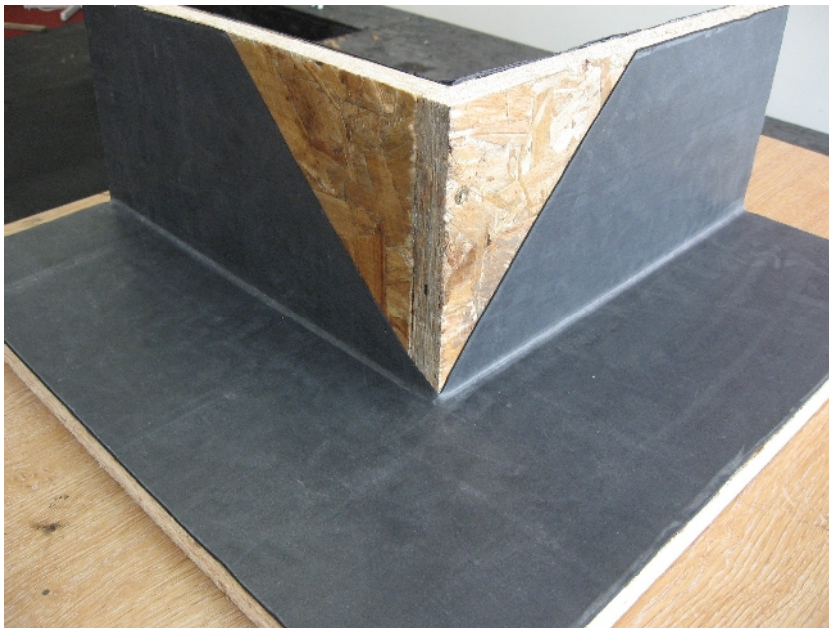




Offer the membrane to the upstand...



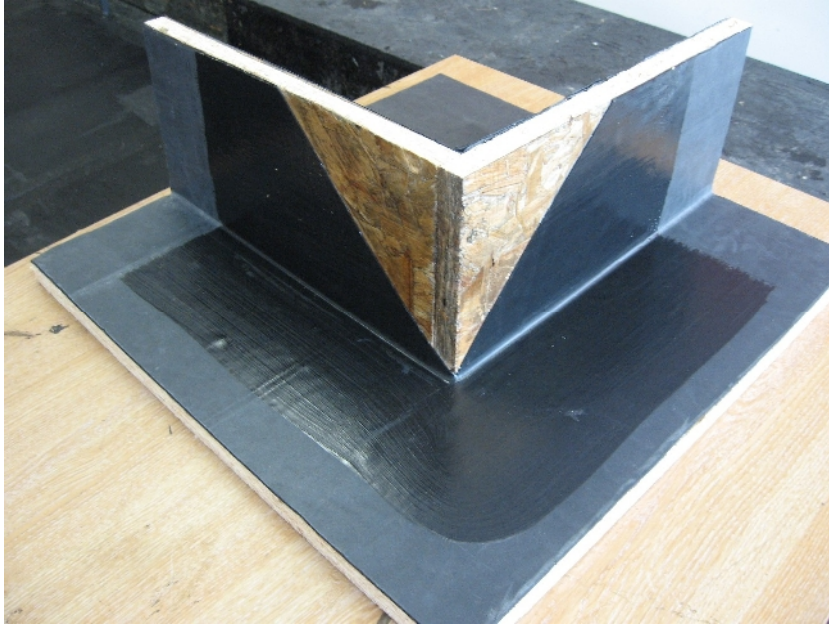
The rest of the membrane can now continue around the corner, and be adhered in place.



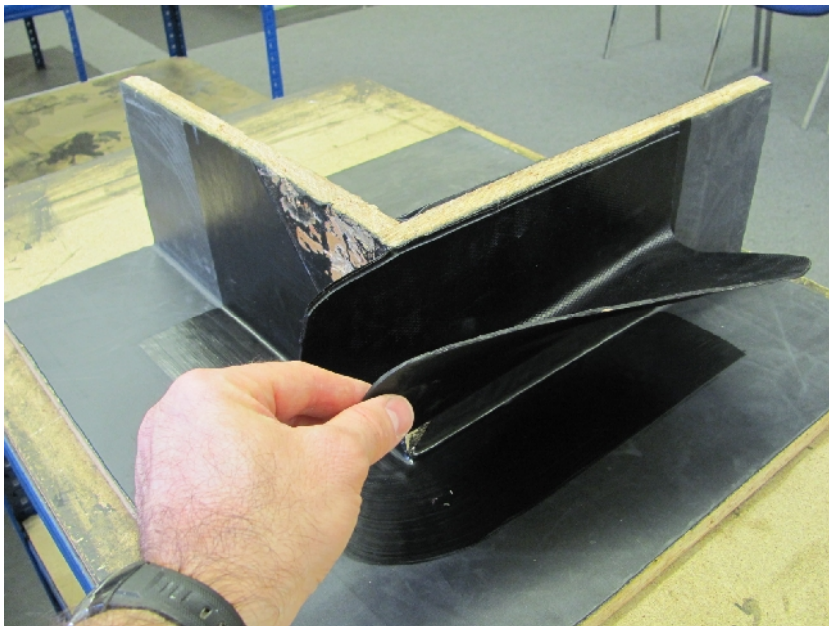
This area now needs to be waterproofed, and this is done with Quickprime Plus and Quickseam Formflash.

The corner is to be waterproofed with 2 pieces of Quickseam Formflash, each with a minimum 50mm onto the deck, and 75mm beyond the termination at the top.

As with any of the Quickseam tapes, Quickprime Plus needs to be applied to the area the tape is to be mated with, and also ensure the area is clean without any debris or brick dust around.

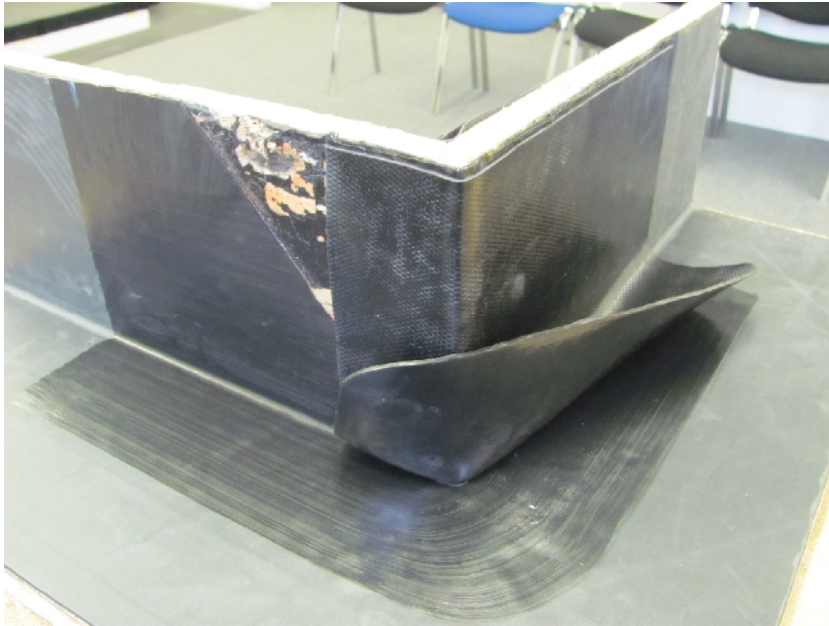


Once the Quickprime Plus is tacky, apply the Quickseam Formflash starting from the top of the upstand working it down towards the base.





Before you adhere it to the deck, apply the Quickseam Formflash around the corner by 75mm and attach.



The Quickseam Formflash can now be mated to the deck area.



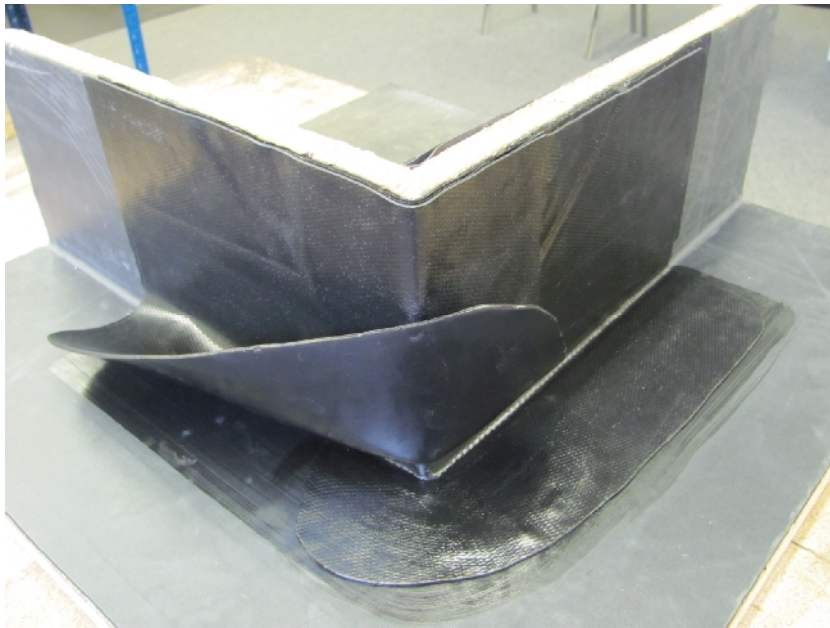
Using the penny roller, work the Quickseam Formflash right into the angle change, starting from the corner itself. This method will help prevent any unsightly air bubbles from becoming trapped.



Repeat the procedure with the 2<sup>nd</sup> piece of Quickseam Formflash to complete the corner, but remember to apply Quickprime Plus to the top of the first piece of Quickseam Formflash, where the 2<sup>nd</sup> piece is to be applied.











The finished detail.

