

Pipe flashing detail (Quickseam Formflash)

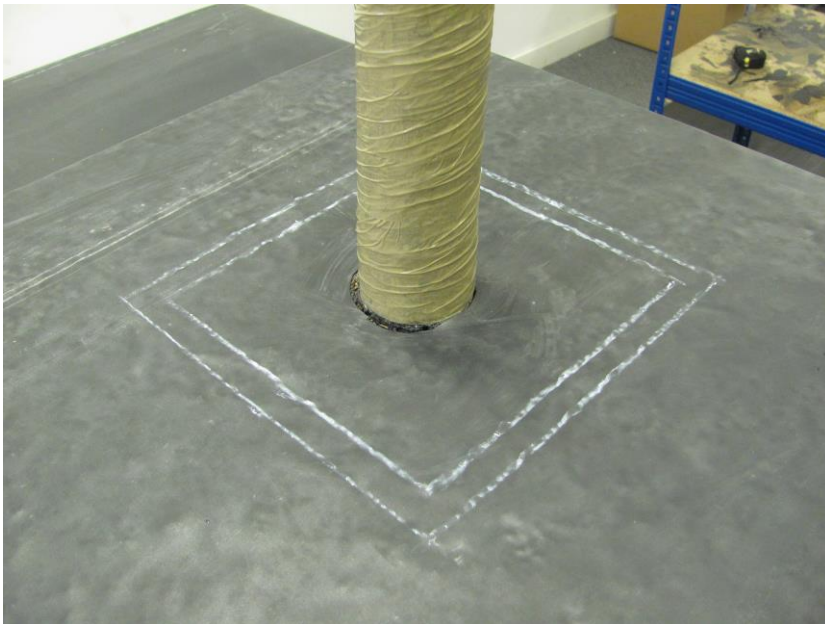


Pipe flashing detail (Quickseam Formflash)

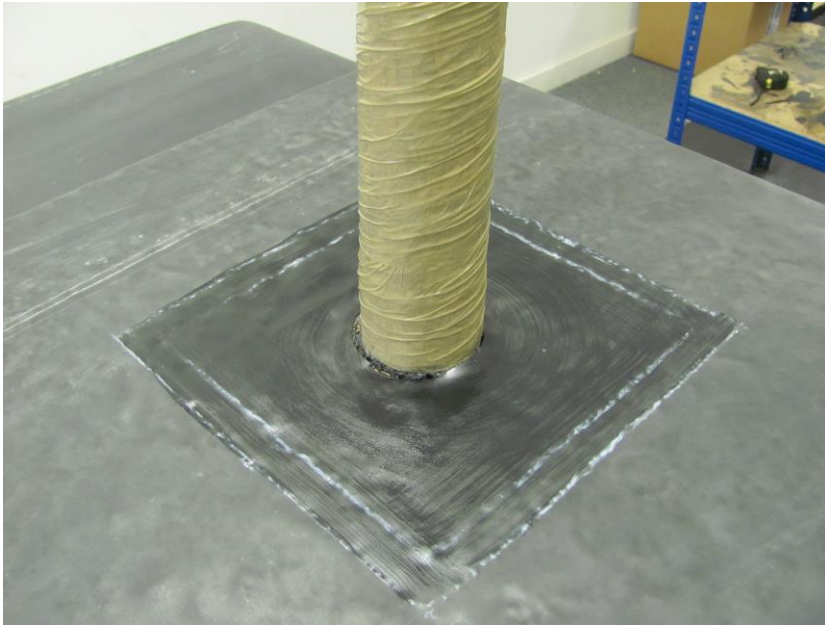
As with any detail, make sure the area is clean and dry.



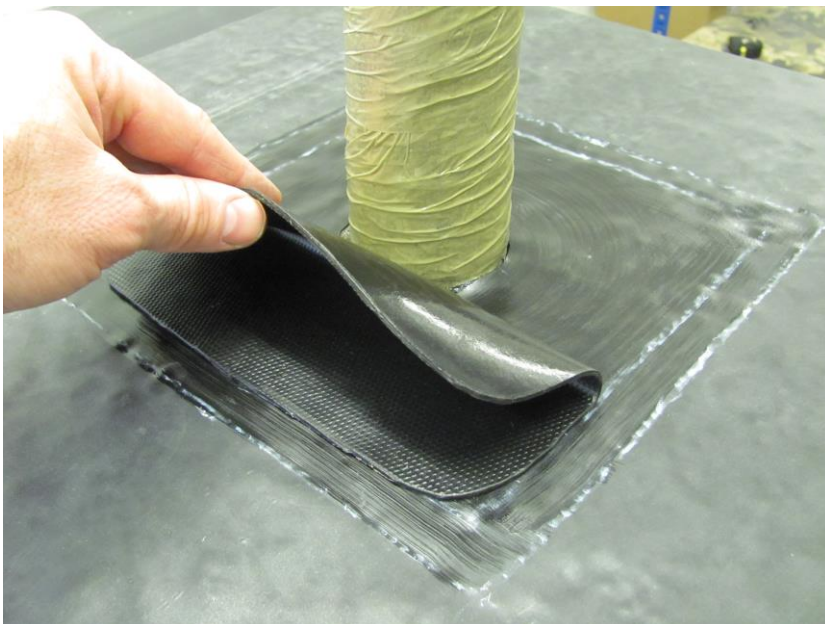
There are 3 pieces of Quickseam Formflash needed to complete this detail, two of which are the same size for the base area, and one to wrap around the pipe. With the crayon, mark out the area to be primed at least 95mm from the pipe. Also mark out 75mm distances as a guideline for applying the Quickseam Formflash.



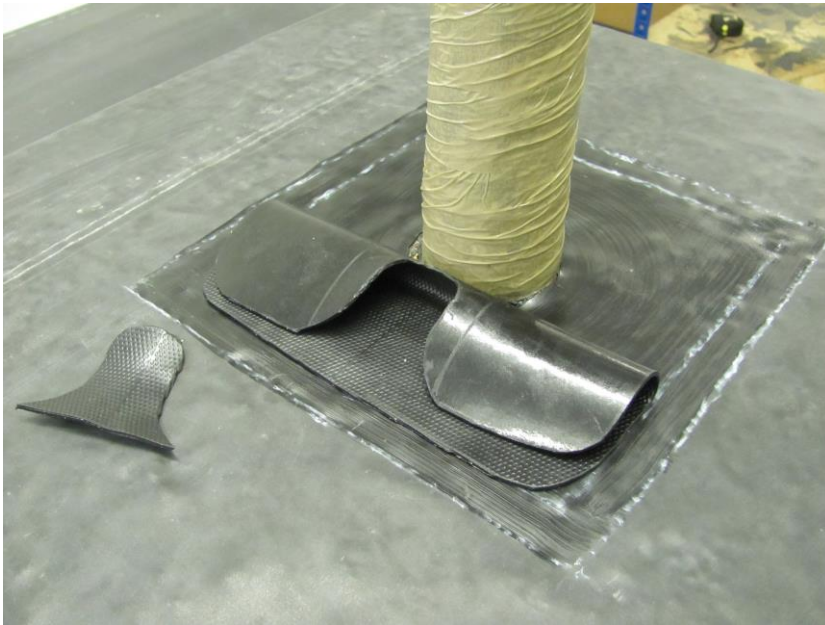
Apply the Quickprime Plus to the outer markings around the pipe, and also approx. 75mm up, and wait until tacky.



Round the corners off the Quickseam Formflash, and mate onto the deck in line with the 75mm markings.

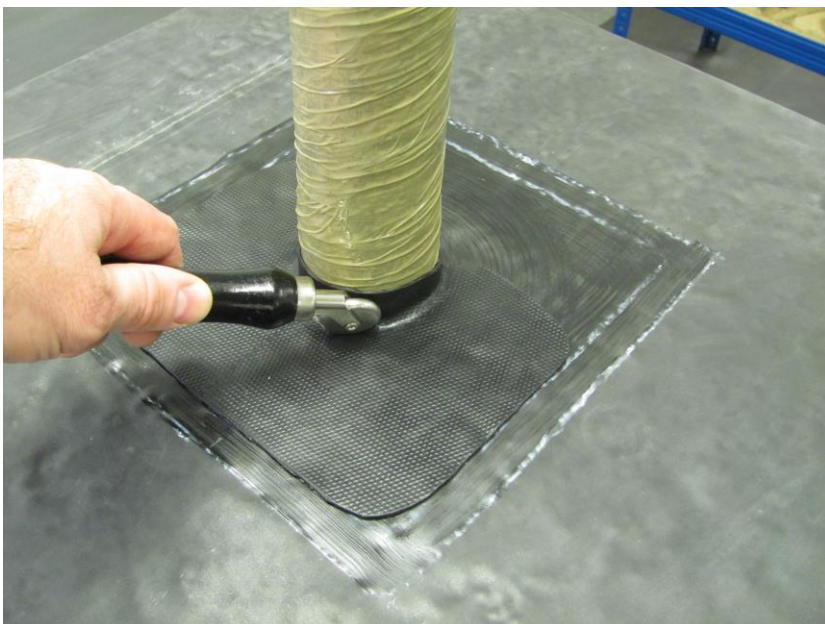


On the reverse of the tape, mark and cut out a bell shape as shown below, 25mm smaller than the dimensions of the pipe. This will create a small upstand on the pipe.

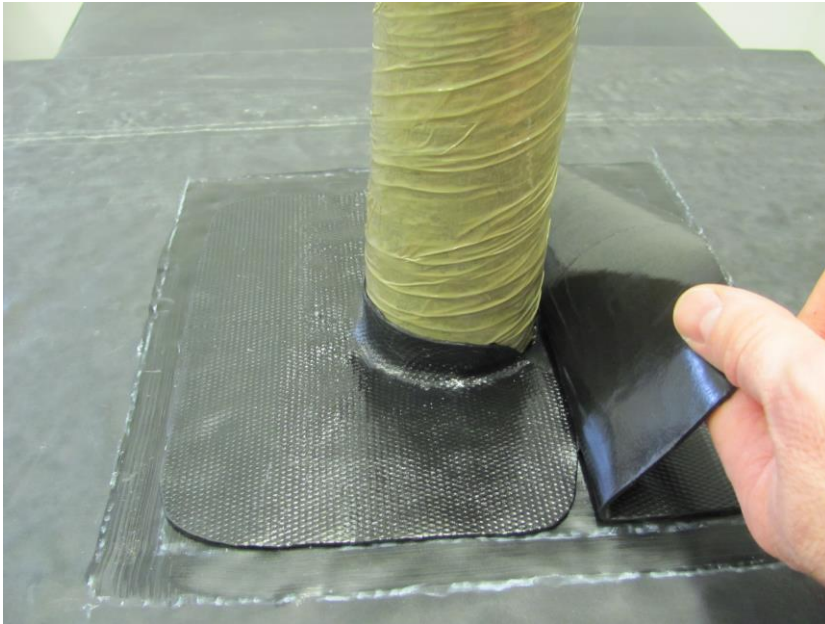


Apply the Quickseam Formflash around the pipe, keeping the edges in line with the 75mm markings.

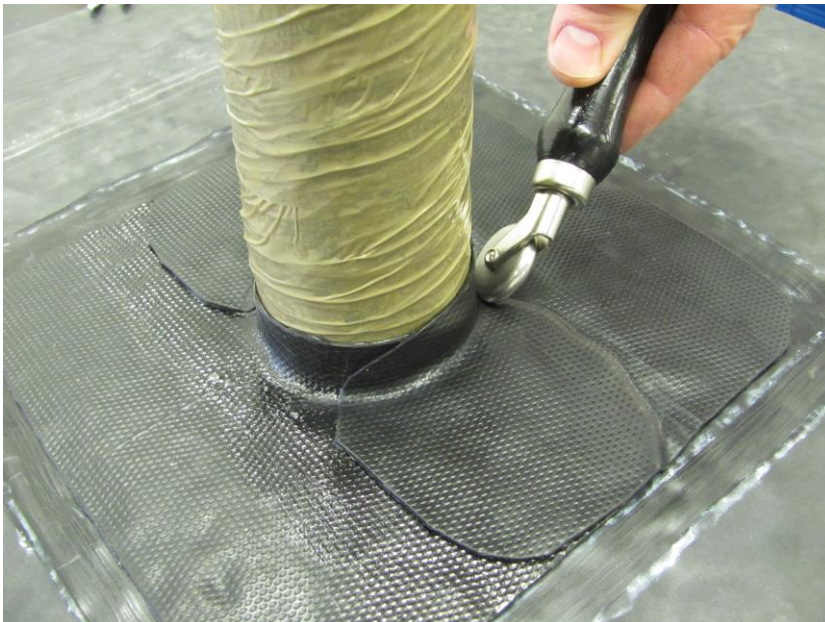
Use the silicon roller to ensure the Quickseam Formflash has attached completely, and the penny roller to remove any air gaps around the base of the pipe.



Repeat the procedure for the opposite side, but don't forget to apply Quickprime Plus to the area where the 2nd piece is to be applied.



When applying, keep the edges in line with the first piece of Quickseam Formflash and finish with the rollers.



The final piece of Quickseam Formflash wraps around the pipe, and is then laid onto the deck by 50mm. The size of Quickseam Formflash needed = circumference of the pipe + 100mm for the overlap. E.g., a pipe with a 220mm circumference will require a 320mm piece of Quickseam Formflash.

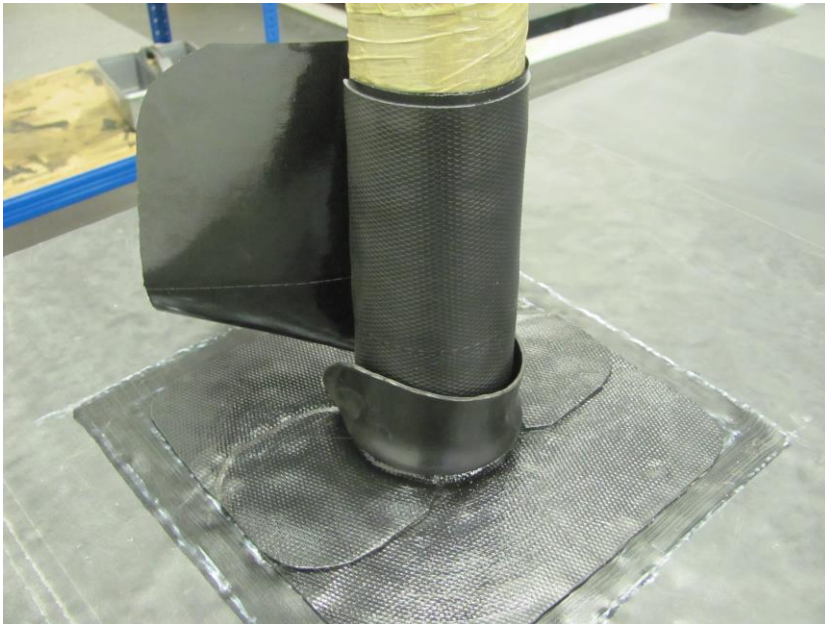
As with the external corner, mark a line where the top of the Quickseam Formflash is to be applied, allowing for minimum 50mm onto the deck.



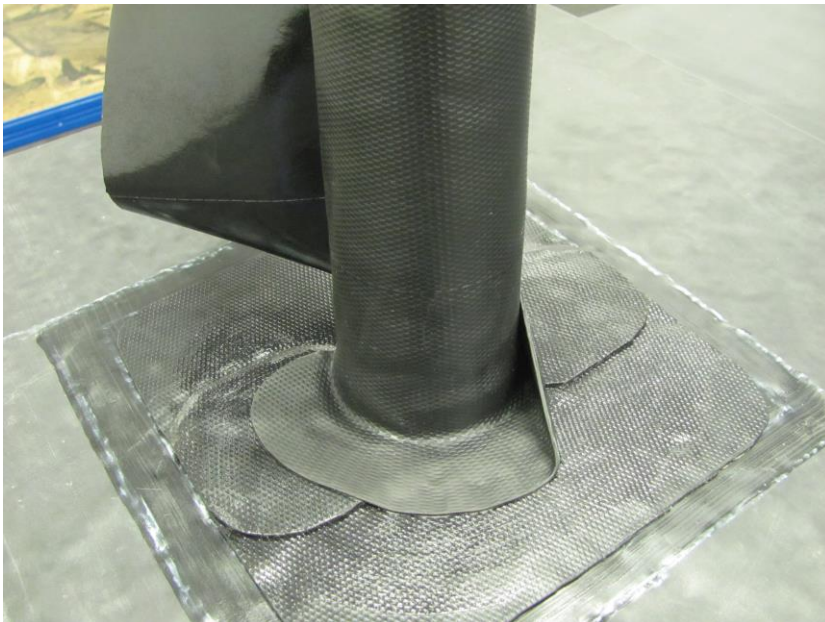
Apply Quickprime Plus to the area, and wait until tacky as normal.



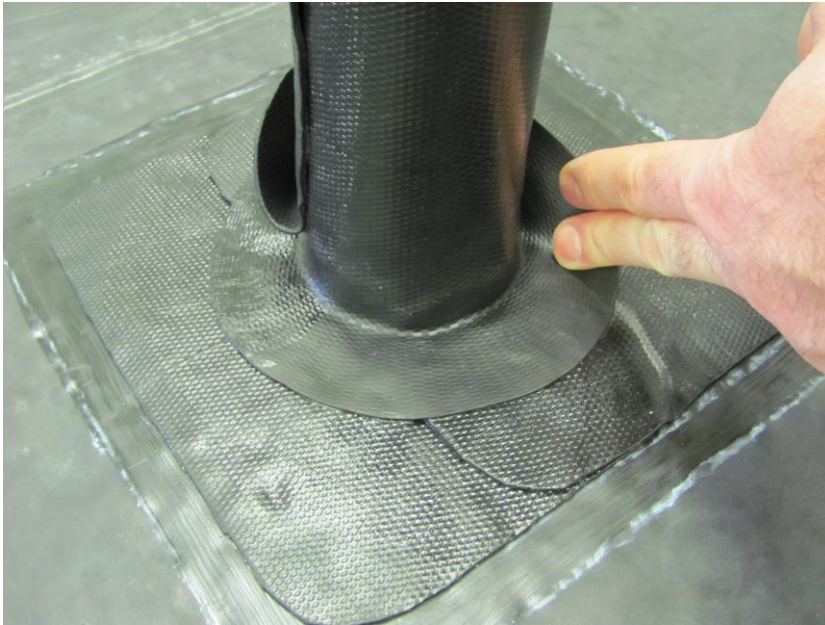
Apply Quickseam Formflash and wrap around the pipe as shown :-



Quickprime Plus needs to be applied where the overlap will attach, so start to lay the Quickseam Formflash onto the deck, but only enough (approx. 125mm) for the Quickprime Plus to be applied.



Apply the Quickprime Plus and once it is tacky, attach the overlap to the pipe, and bring the rest of the Quickseam Formflash onto the deck. Use the rollers as normal.



The finished detail.

