



Installation Guides

How to Join EPDM with 3" Seam Tape

We offer a range of roofing and building solutions to tradesmen, stockists, and directly to consumers. Long term solutions to age old problems. Partnering with some of the biggest names in the industry, we have a long history of quality and excellence.



 www.permarroofstore.co.uk

 sales@permarooof.co.uk

 01773 441 947

EPDM Installation Guides



How to Fit an EPDM 3" Seam Tape Join

In this installation guide, we will demonstrate how to join two pieces of EPDM together using the 3-inch seam tape.

PermaRoof UK how-to guides offer trade and DIY roofers a step-by-step approach to installing your EPDM membranes and accessories. Our demonstrators are qualified EPDM installers and run our [flat roofing training courses](#) at the PermaRoof headquarters in Derby.

In addition, we have an extensive range of video tutorials available in our [video library](#). We offer industry-leading support for all your projects, large or small.

Talk to the PermaRoof UK team today on:

01773 441 947

How to make an EPDM join with 3" seam tape



Step 1: Ensure the leading edge overlaps the lower sheet by at least 100mm, and has a straight edge along the entire length of the seam.



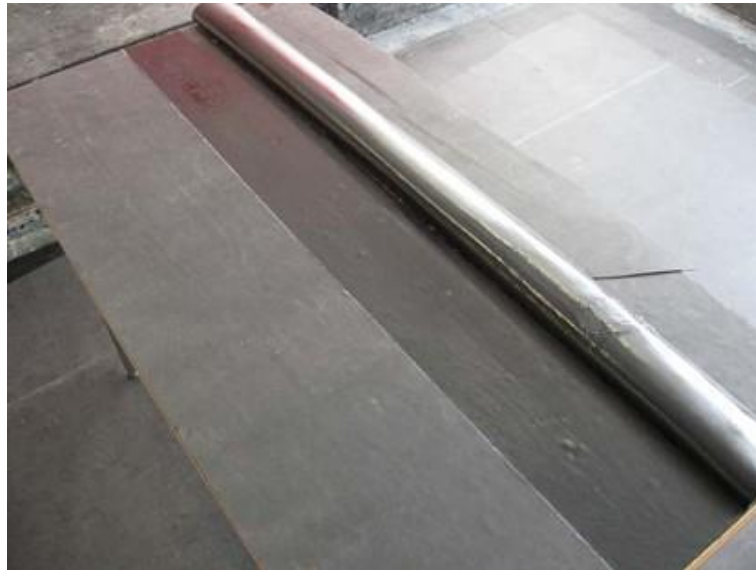
Step 2: Position and mark the sheet with a white crayon. The line should be 18mm from the leading edge of the overlap, all the way down the seam. An 18mm timber batten is a useful tool for this.



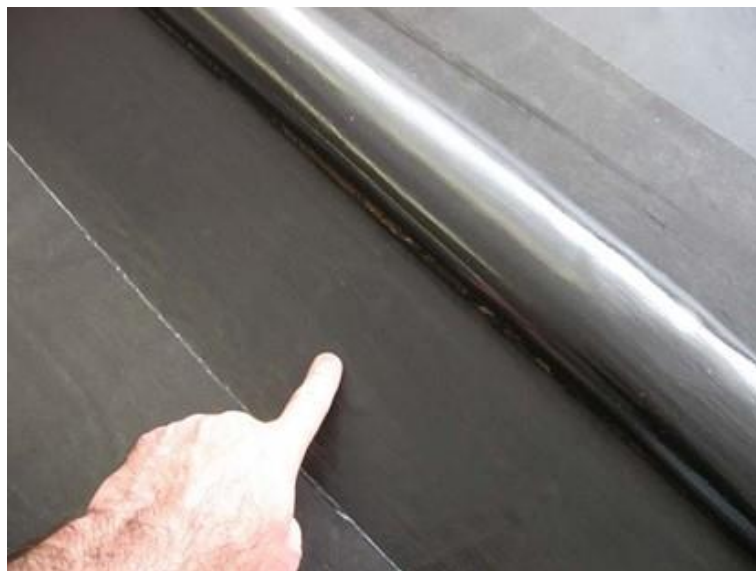
Step 3: Flap the leading edge away from the line. It may be necessary to keep it secured with various items so it will not flap back onto your working area.



Step 4: Apply Quickprime Plus with a scrubber pad and handle, from the marked line and at least 100mm wide. Apply Quickprime Plus to the overlapping membrane also. Apply all the way down the seam avoiding puddles by spreading it out evenly.



Notes: Wait for the Quickprime Plus to go tacky. This is especially important, as the tape will not adhere to it if it is in a wet state.

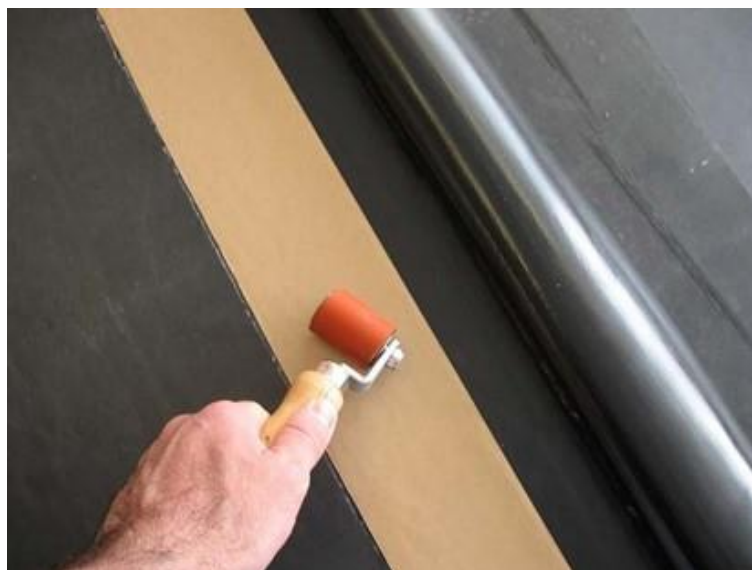


Use the "pushed finger" test, and if the finger moves through the Quickprime Plus or is stringy in any way, it is not ready.



Step 5: Once the Quickprime Plus is dry, apply the tape to the primed area. Lay the edge of the roll of tape parallel to the marked line, keeping the tape taut to prevent air bubbles being caught underneath it.

Notes: If the tape veers off at an angle, cut it, peel the backing paper and overlap the tape by at least 50mm. Continue to lay the tape. This ensures you stick to the marked line. This also applies if you run out of tape, and have to start a new roll. Use the silicon roller to ensure the tape has adhered properly to the membrane.





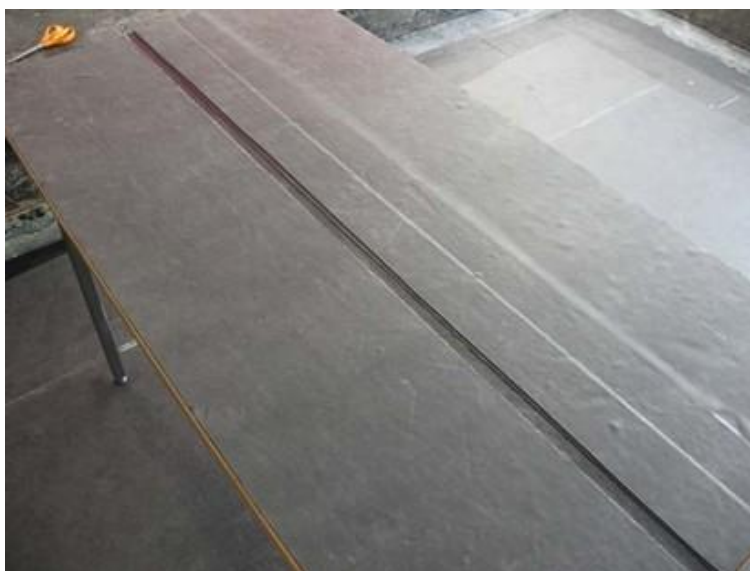
Step 6: Flap the leading edge back, and check the distance to the brown paper edge of the tape. This should be around 18mm. Trim the top leading edge if necessary.



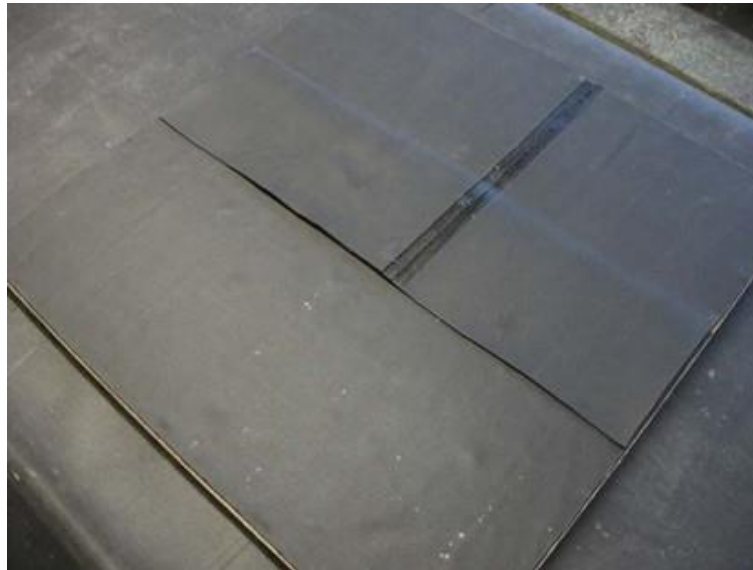
Step 7: Lift up the leading edge, and starting from one end of the tape, peel the backing paper towards you, and let the primed leading edge fall onto the tape, flattening down with your hand whilst peeling.



Step 8: Using a silicon hand roller, roll the entire seam thus eliminating any air pockets.



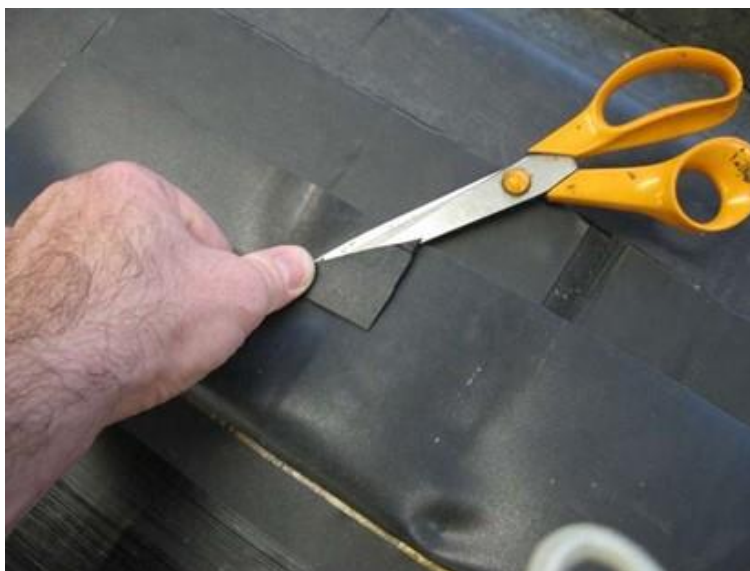
The finished seam will look like this.



Notes: A T-piece detail is required whenever the end of a seam needs to join an adjacent membrane as shown above.



An excess of membrane from underneath the original seam will need to be cut back at a 45° angle. If this is not done, it will leave an unsealed entrance point for water ingress.



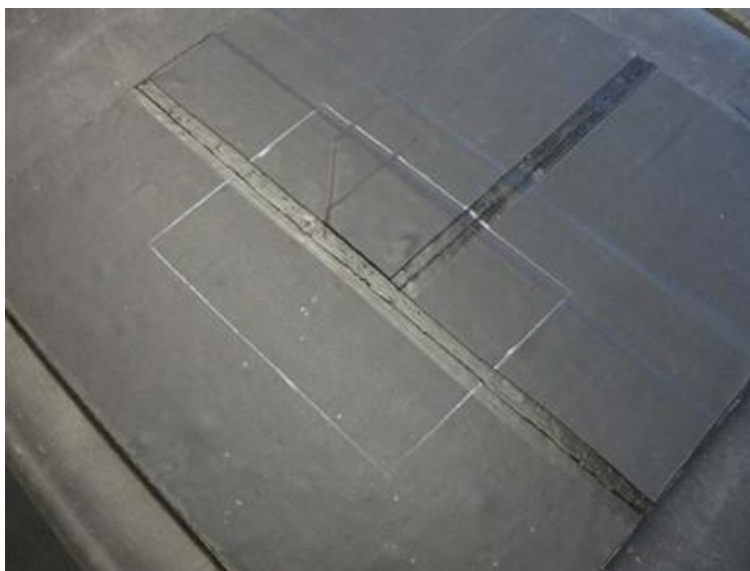
Step 9: Cut away the excess membrane as shown.





Step 10: Do the seam join as usual and use the rollers to firmly press down the seam.





Step 11: This area now needs to be reinforced with a patch of Quickseam Formflash, of size 150mm x 225mm. This covers the necessary 75mm from the weak points. Mark the area to be primed.

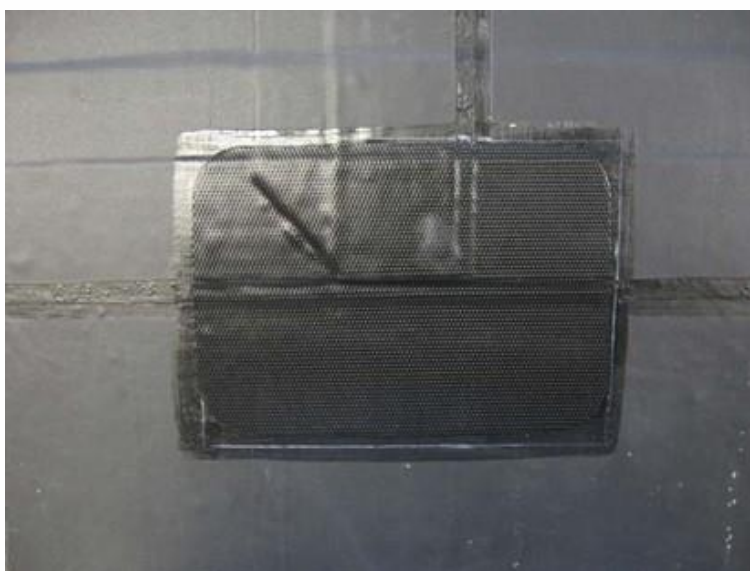


Step 12: Apply Quickprime Plus using the pad, exceeding just beyond the crayon lines.



Step 12: Apply the Quickseam Formflash, and use the rollers as normal.

The finished T-piece should look like this.



Buy 3-inch seam tape and find all your install essentials at the PermaRoof UK Store

[Buy 3-inch seam tape](#)

PermaRoofUK

01773 608 839

perमारooF.co.uk

Shop online

perमारooFstore.co.uk

EPDM roofing training:

perमारooF.co.uk/roofing-training-courses

Further EPDM resources:

perमारooF.co.uk/diy-flat-roof-library

Visit our YouTube channel for tutorials:

youtube.com/user/PerमारooFOnline/videos

PermaRoofUK is a part of PermaGroup, dedicated to providing permanent solutions to age-old problems and bringing together some of the most innovative roofing and construction systems on the market.

