

Internal drain detail



## Internal drain detail

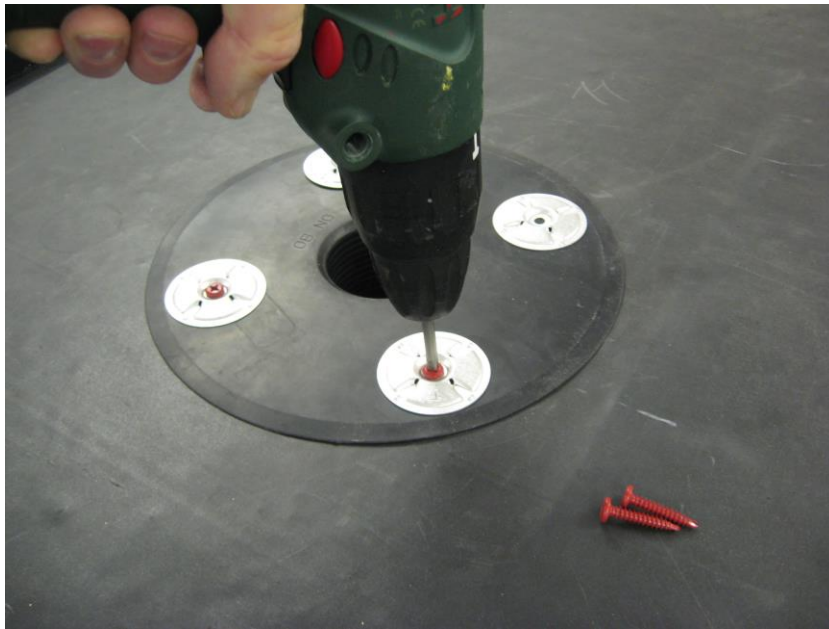
The EPDM membrane should be fully adhered to the substrate and the membrane cut away to reveal the drain hole.



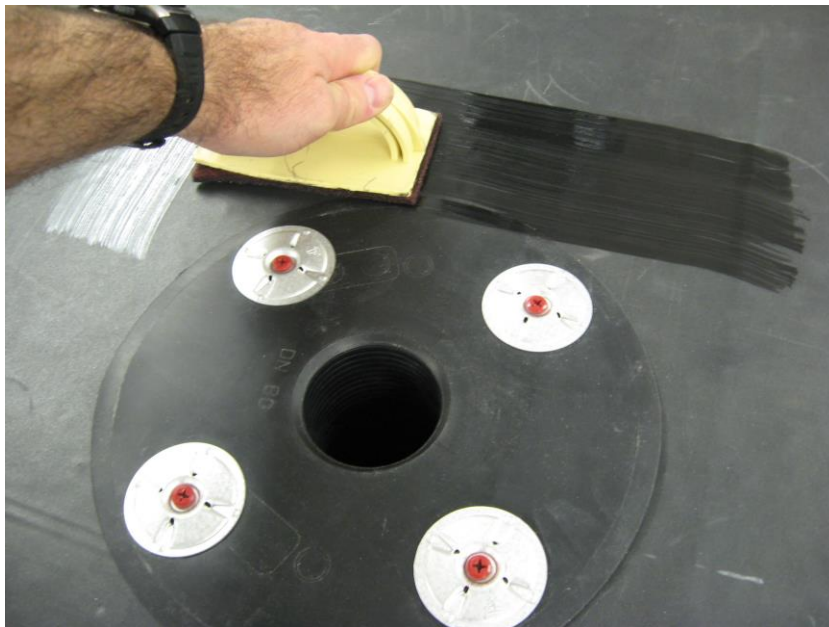
Insert the drain outlet...



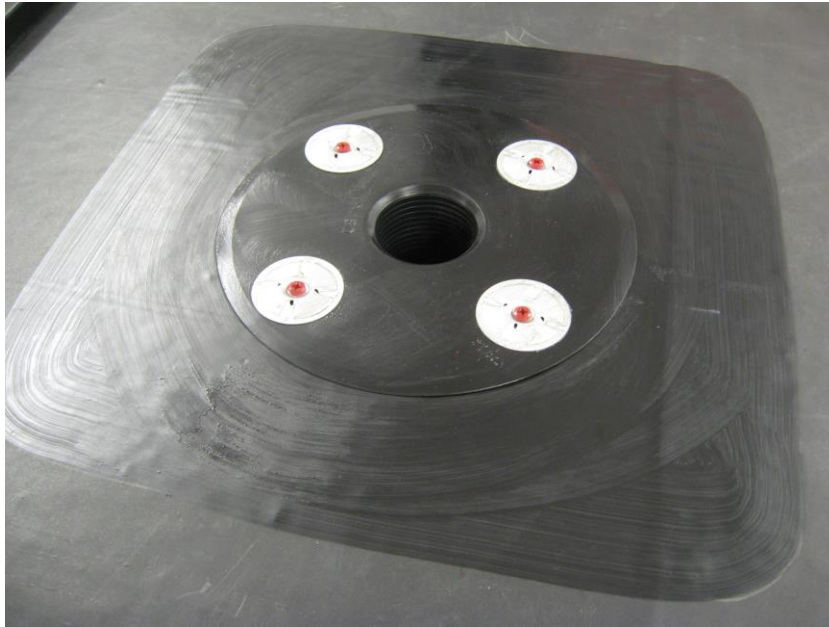
Mechanically fix the outlet to the roof deck using V-plates and All-purpose fasteners.



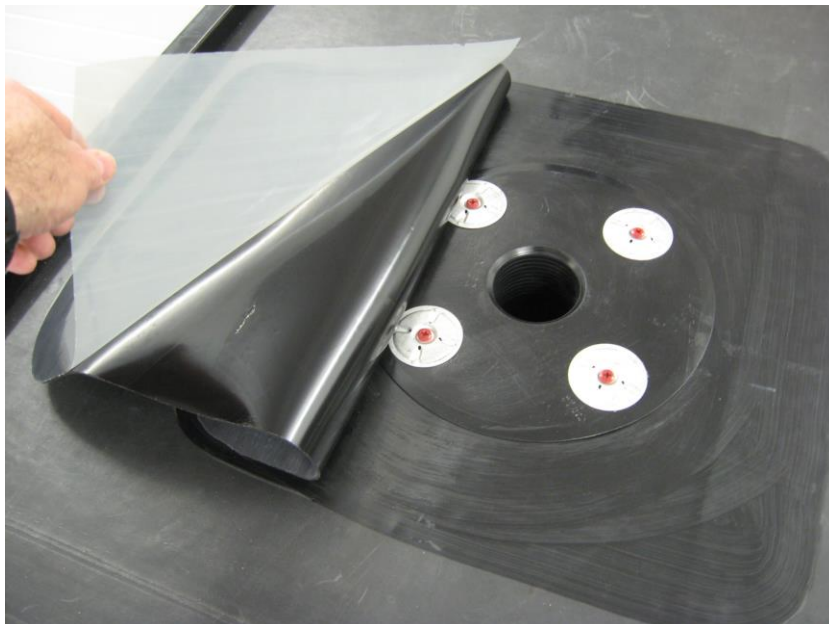
Apply Quickprime plus to the area a minimum of 100mm beyond the perimeter of the flange.



Wait for the Quickprime plus to become tacky.



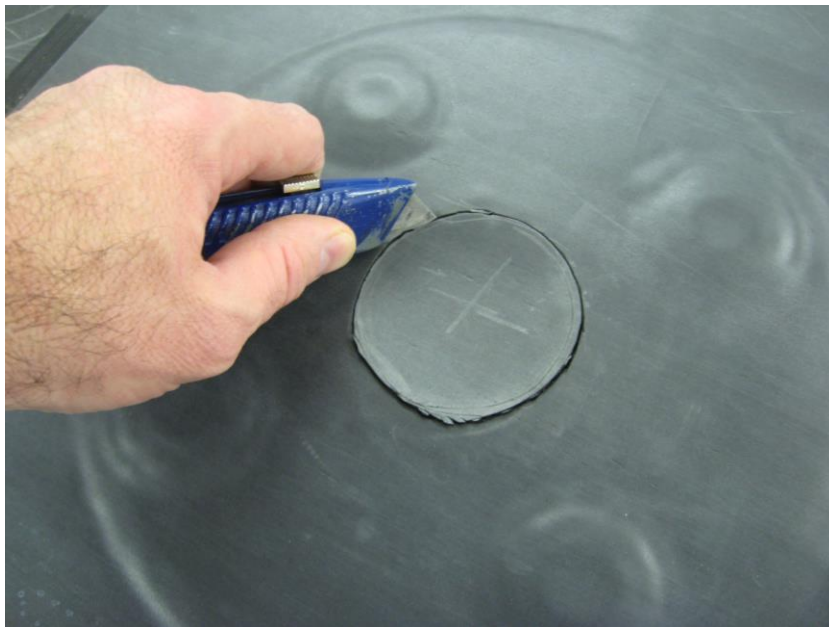
Prepare a piece of SA flashing minimum 75mm larger than the drain outlet diameter and apply to the primed area, ensuring that Quickprime Plus is visible all around the SA flashing.



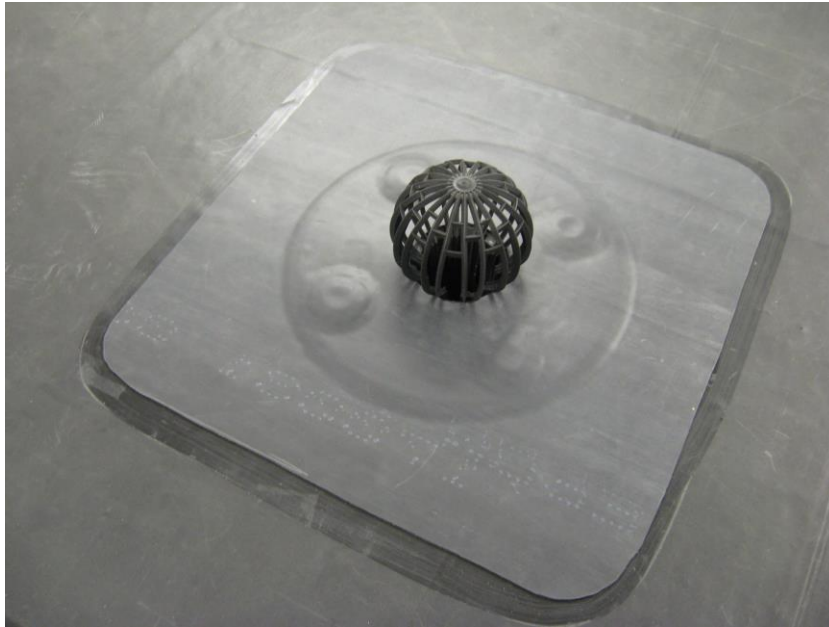
Apply the silicon roller for total adhesion.



Remove the SA flashing part that covers the outlet by cutting a hole around its diameter. Take care not to cut into the drain outlet itself.



The finished detail with leaf guard inserted.



**Note: Before the membrane is laid, it is preferable that some preparation work to rebate this area to the roof deck is made. This ensures that the SA flashing will sit level with or below the roof deck line, allowing water to drain away more freely.**