



Installation Guides

How to Fit an EPDM 6" Cover Strip

We offer a range of roofing and building solutions to tradesmen, stockists, and directly to consumers. Long term solutions to age old problems. Partnering with some of the biggest names in the industry, we have a long history of quality and excellence.



 www.permarroofstore.co.uk

 sales@permarooof.co.uk

 01773 441947

EPDM Installation Guides



How to Join EPDM with a 6" Batten Strip

In this installation guide, we will demonstrate how to install the EPDM 6" Batten Cover Strip. This method is commonly used to join two pieces of EPDM together.

PermaRoof UK how-to guides offer trade and DIY roofers a step-by-step approach to installing your EPDM membranes and accessories. Our demonstrators are qualified EPDM installers and run our [flat roofing training courses](#) at the PermaRoof headquarters in Derby.

In addition, we have an extensive range of video tutorials available in our [video library](#). We offer industry-leading support for all your projects, large or small.

Talk to the PermaRoof UK team today on:

01773 441 947

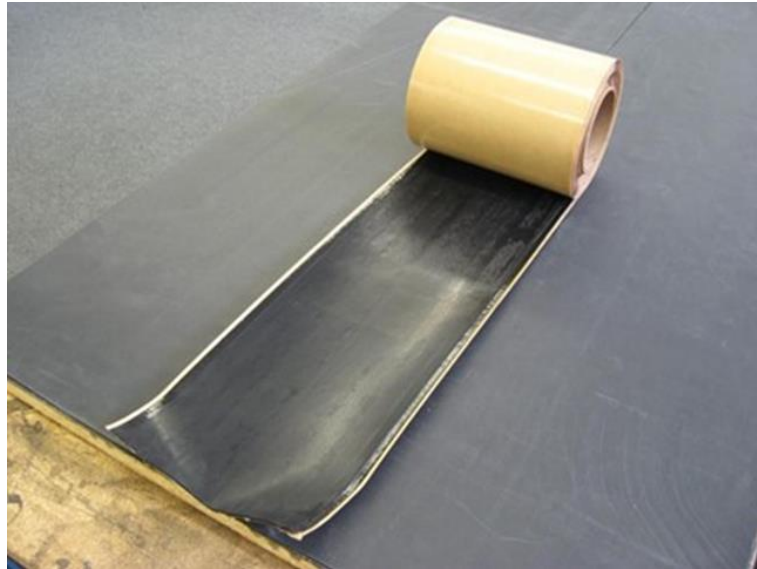
How to make an EPDM join with 6" Cover Strip Tape

Step 1: Make sure that the contact adhesive is used on both the back of the membrane and deck surface to secure the edges.



Note: Firestone Bonding Adhesive (contact adhesive) is now dark green in colour. It is also available in spray form.

Step 2: With the membrane now adhered to the deck, lay the tape in situ evenly across the join.

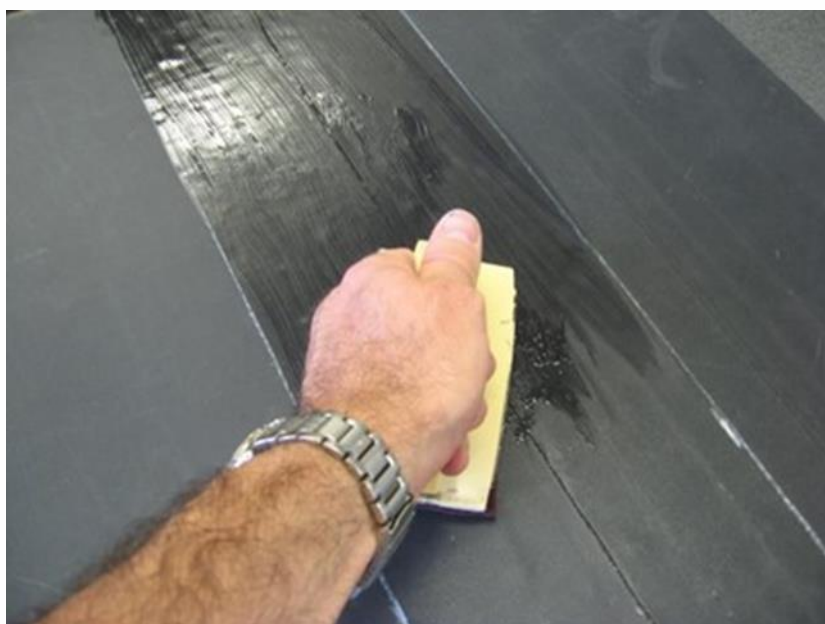


Step 3: Outline with a crayon where the edges of the tape lie. This gives a guideline for you to apply Quickprime Plus. Make sure that the crayon marks extend beyond the edge of the tape around 20mm each side.

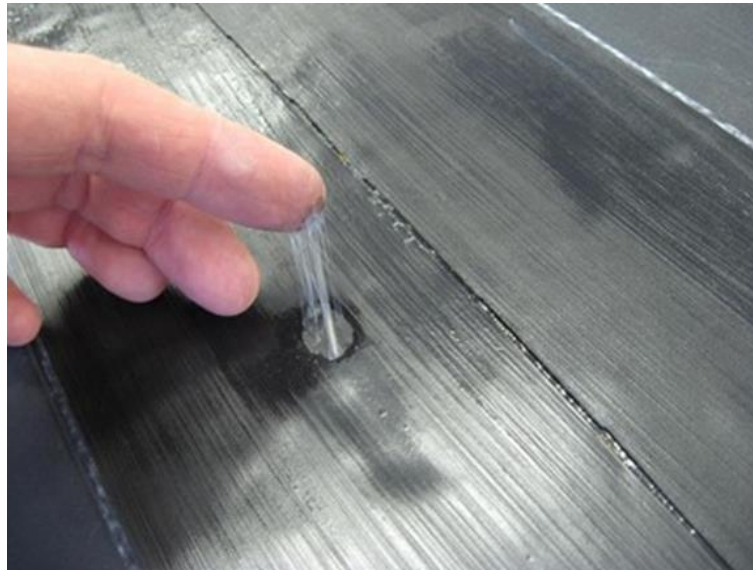




Step 4: Apply Quickprime Plus with a Quickscriber pad and handle within the marked area. Apply all the way down the joint, avoiding puddles by spreading it out evenly.

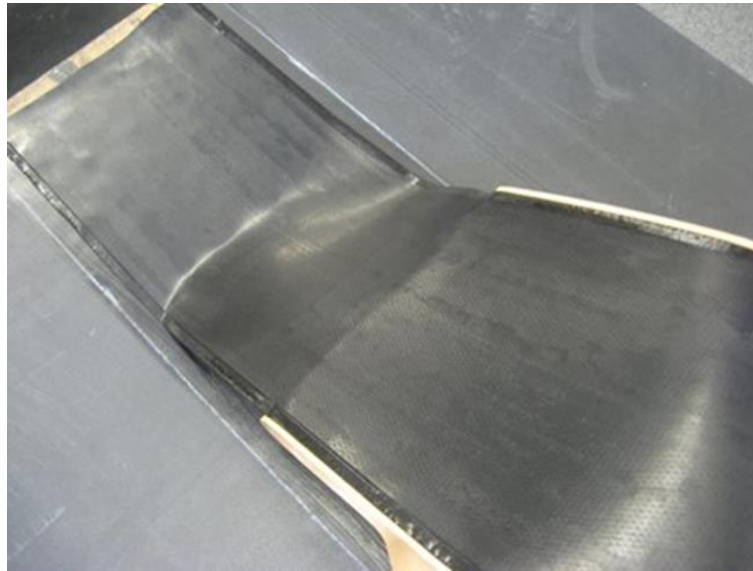


Step 5: Wait for the Quickprime Plus to go tacky. This is especially important, as the tape will not adhere to it if it is in a wet state.



Use the “pushed finger” test, and if the finger moves through the Quickprime Plus or strings in any way (as shown), it is NOT ready for the tape.

Step 6: Once the primed surface is ready, apply the tape to the area. Lay the tape parallel to the marked line, keeping the tape taut to prevent air bubbles being caught underneath it.

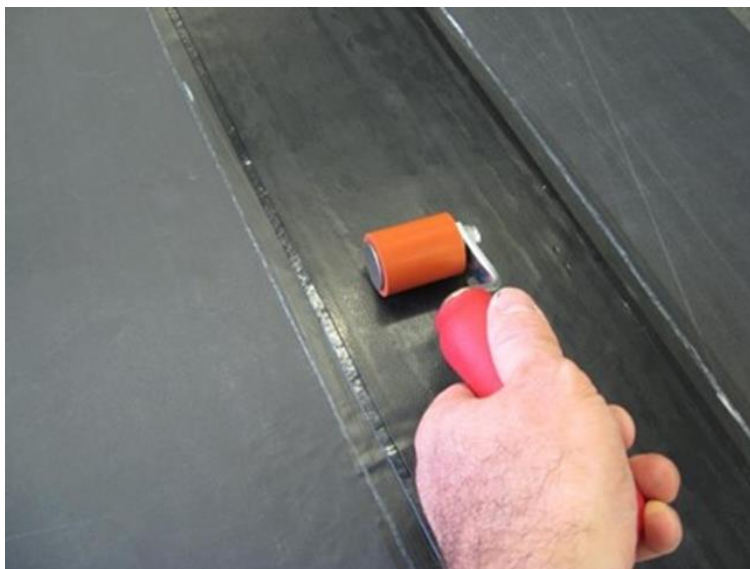


If you run out of tape, overlap the last 50mm with a new roll, but don't forget to apply Quickprime Plus on top of the tape. Continue to lay the new roll of tape. Once the tape is laid, remember to overlay the joint with a 150mm x 229mm patch of Quickseam Formflash.

Step 7: Use the silicon roller to ensure the tape has adhered properly to the membrane, firstly across the joint...



Step 8: ...then parallel to the joint.





The finished detail.

Buy 6" EPDM cover strip tape at:

www.permarroofstore.co.uk/6-batten-cover-strip

PermaRoof UK

01773 608 839

perमारooF.co.uk

Shop online

01773 441 947

perमारooFstore.co.uk

EPDM roofing training:

perमारooF.co.uk/roofing-training-courses

Further EPDM resources:

perमारooF.co.uk/diy-flat-roof-library

Visit our YouTube channel for tutorials:

youtube.com/user/PerमारooFOnline/videos

PermaRoofUK is a part of PermaGroup, dedicated to providing permanent solutions to age-old problems and bringing together some of the most innovative roofing and construction systems on the market.

