

External corner detail using SA flashing



External corner detail (SA Flashing)

The external corner is a common detail and is dealt with as follows:-

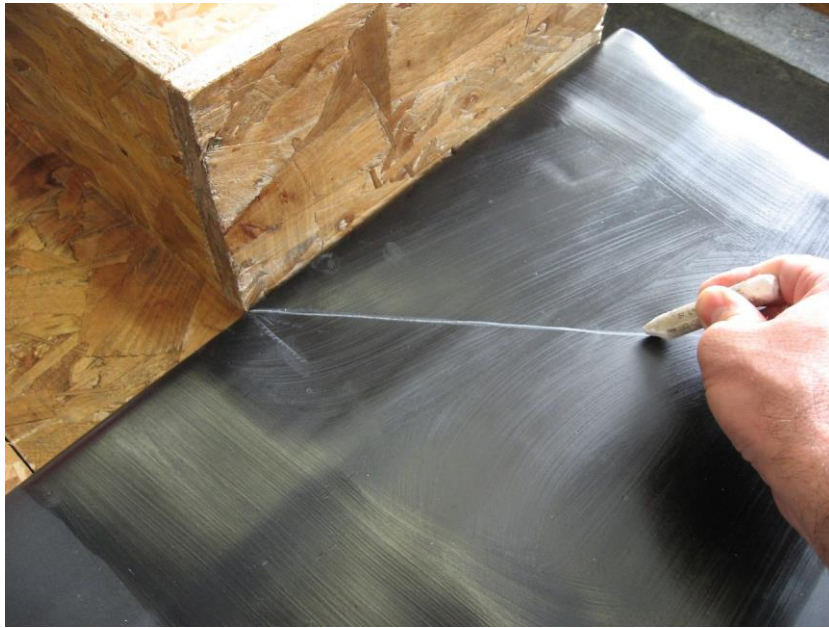
Offer the membrane up to the base of the upstand and fold back enough material to get the 4" roller in to apply the contact adhesive onto the deck, the upstand, and also on the back of the membrane. Note: Firestone Bonding Adhesive (contact adhesive) is now dark green in colour.



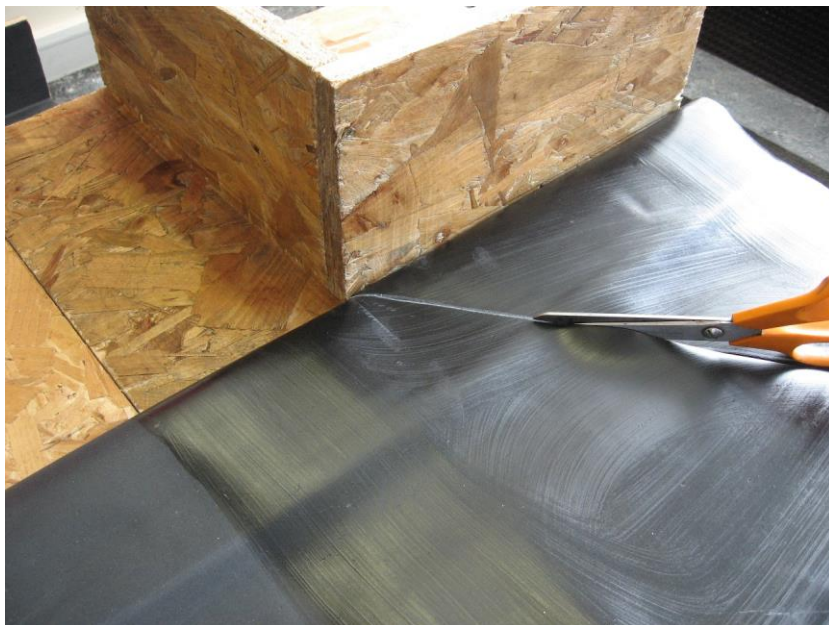
Once the contact adhesive becomes tacky, roll the membrane towards the base of the upstand, pushing right into the angle change to eliminate any tenting.



Mark a line with the crayon, at 45° from the corner. This will create the resulting V-shape on the upstand.



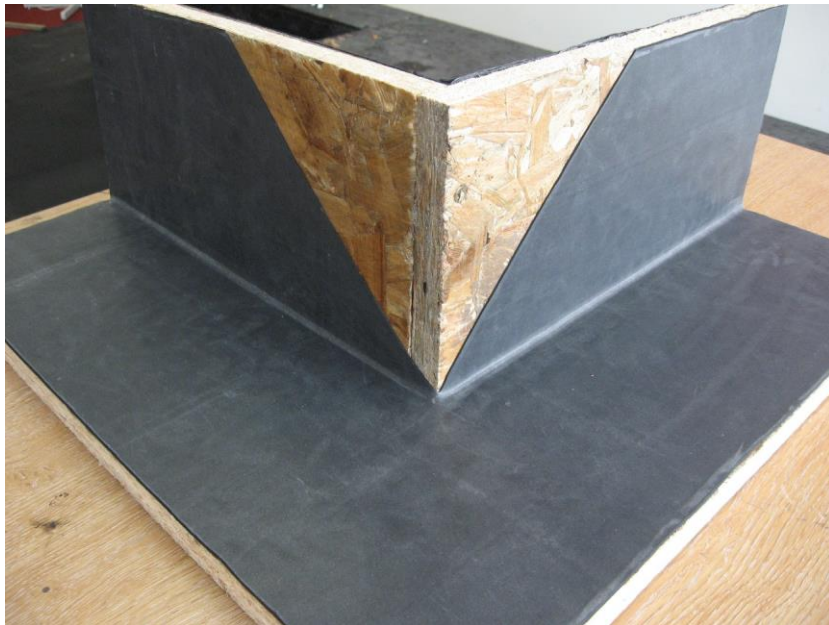
Cut down the marked line until you reach the upstand corner. Also cut away any excess membrane, to make handling the material easier.



Offer the membrane to the upstand...



The rest of the membrane can now be applied onto the roof deck around the corner, and then adhered to the upstand using the same procedure.

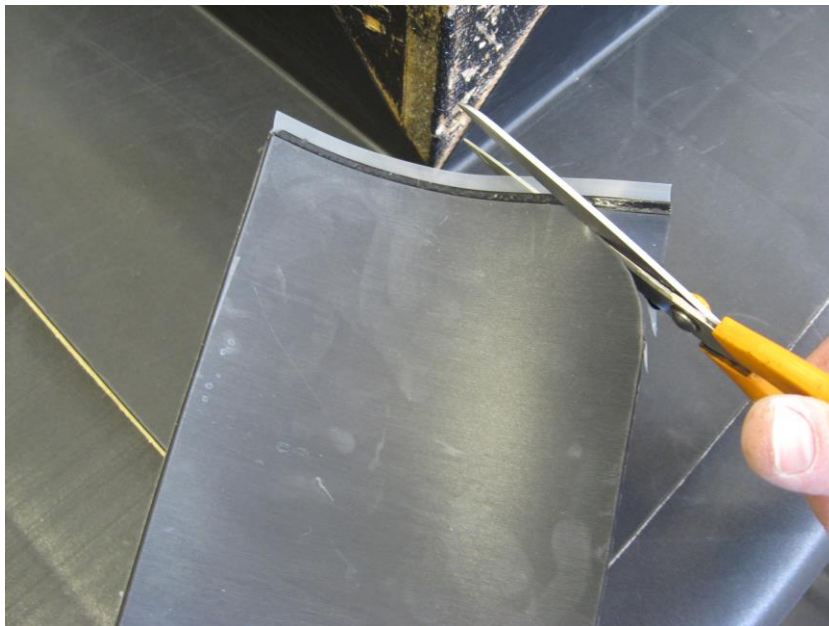


The corner needs to be waterproofed with one piece of SA Flashing and one Quickseam Corner Flashing patch.

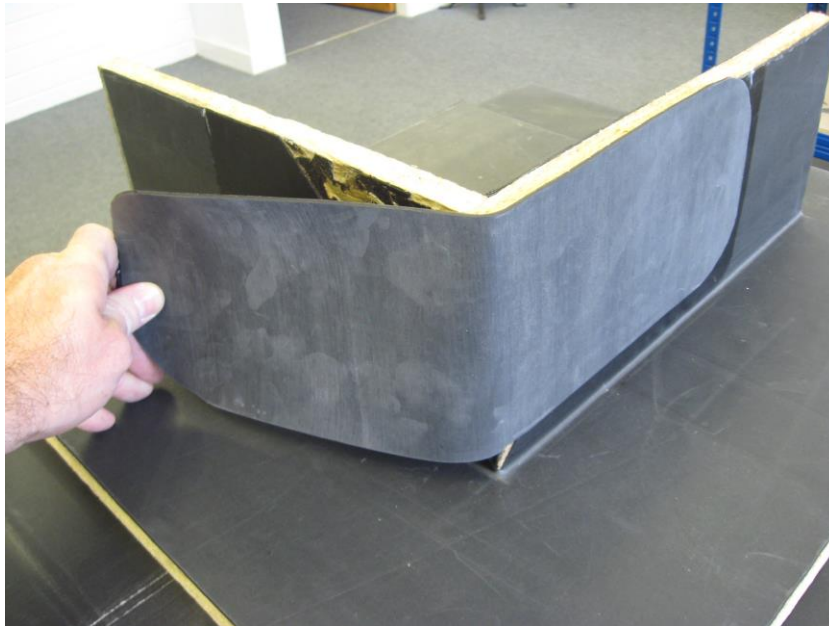
As with any of the Quickseam tapes, Quickprime Plus needs to be applied to the area the tape is to be mated with. Also ensure the area is clean and dry without any dust or debris.



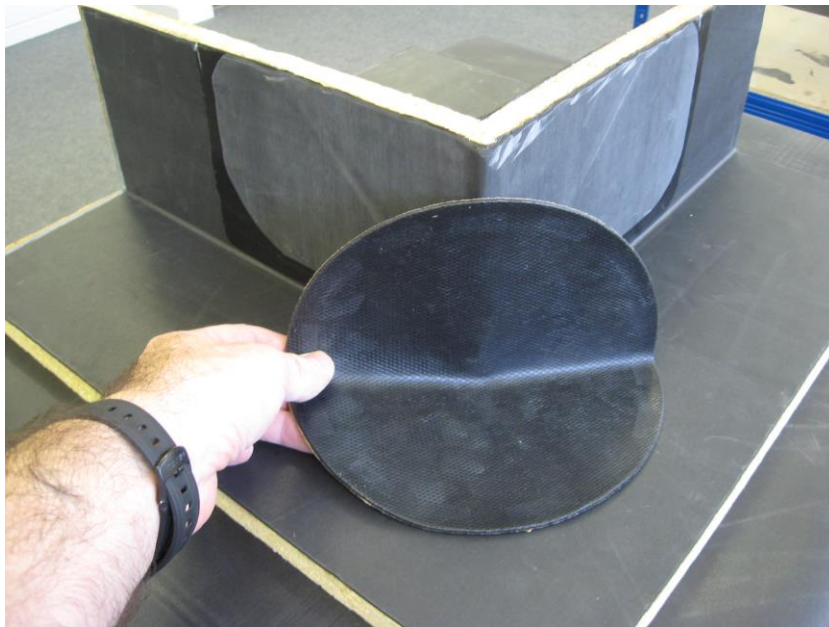
Cut out a piece of SA Flashing and trim the corners.



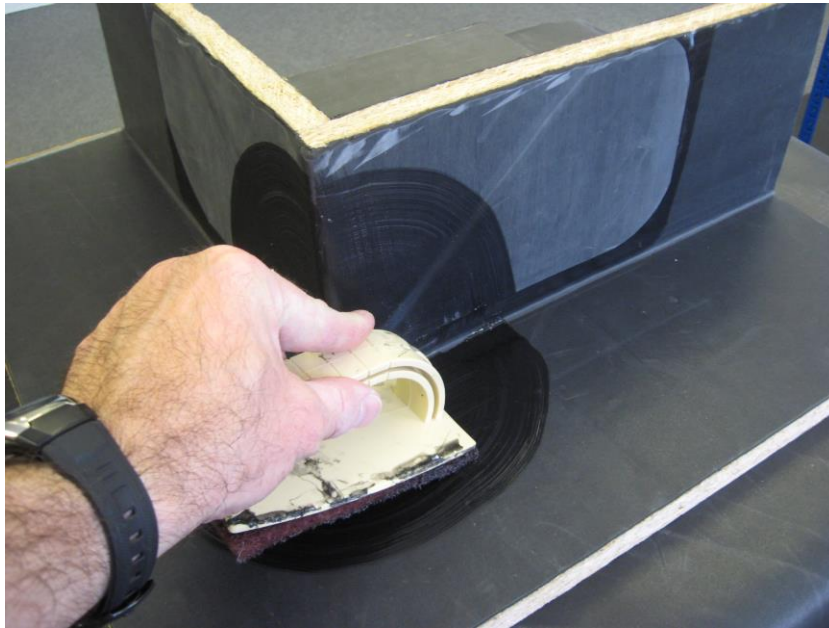
Once the Quickprime Plus is tacky, offer up the SA flashing, using a silicon hand roller to ensure adhesion. Ensure that Quickprime Plus is visible at all edges of the flashing when it is applied. This is less important at the top edge as a metal counterflashing or lead is usually installed here.



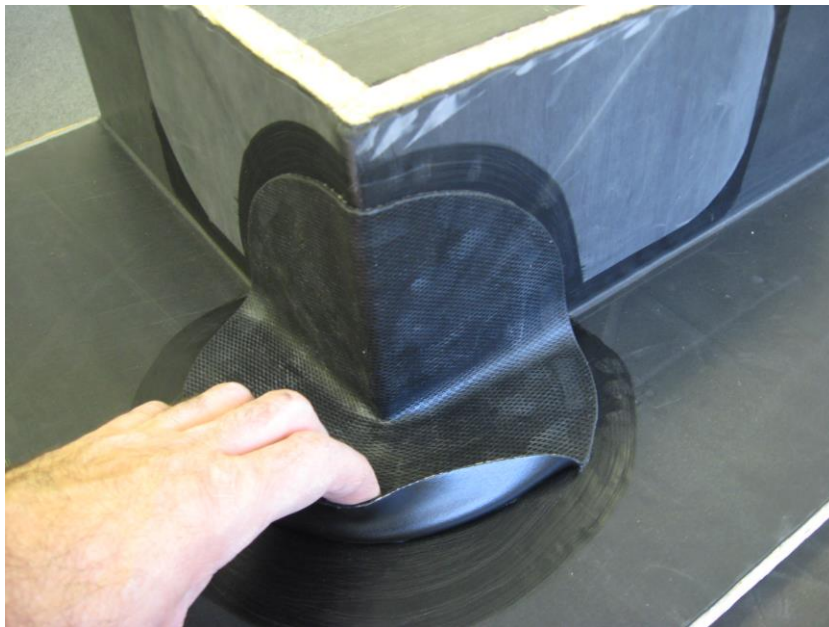
The final waterproofing detail requires a Quickseam corner flashing patch at the corner at the angle change.



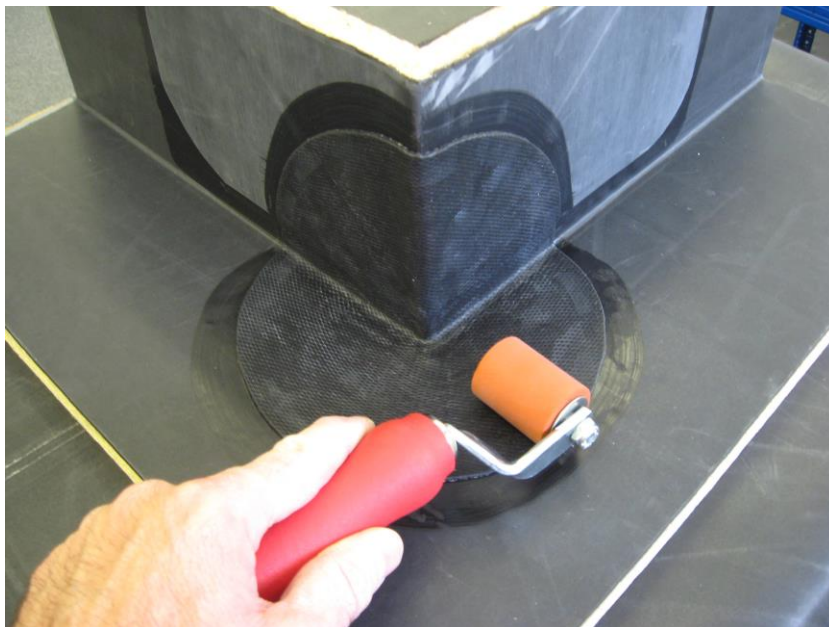
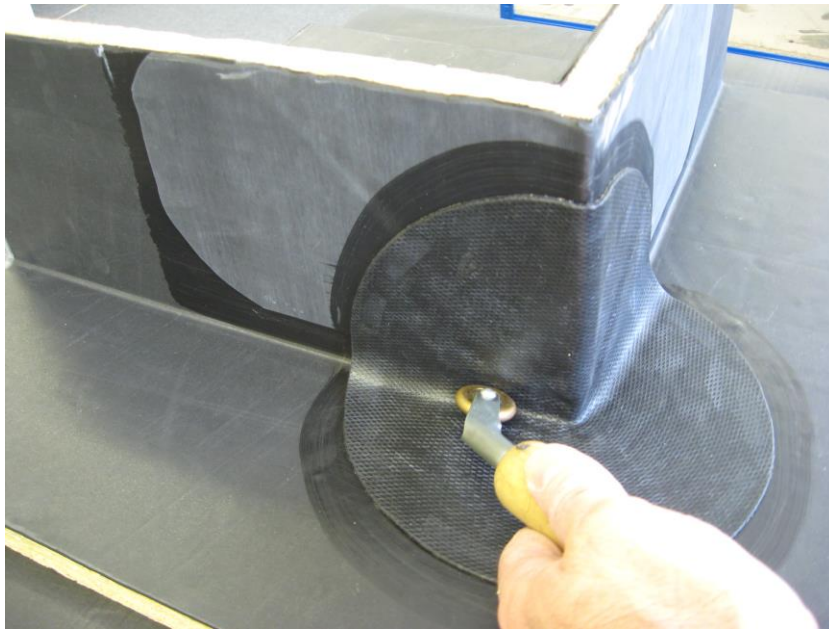
Mark out the area the patch will cover, allowing for a 25mm excess and apply Quickprime Plus to this area.



Once the Quickprime Plus becomes tacky, apply the patch...



...and use the rollers to ensure adhesion.



A finished example of a skylight installation using SA flashing and Quickseam corner flashing patches.

